

KM-570BL/572BL SERIES

High speed, 1/2-needles, unison feed, lock stitch sewing machine with horizontal large hook and automatic thread trimmer



For W24H service
www.swf-service.com

KM - 57 BL -

Needles	Hook	Thread trimming & Motor
0 1-Needle	BL Large hook (x2.5 Capacity)	None Non-thread trimming : Clutch motor
2 2-Needles		7 Auto-thread trimming : Servo motor

Specification

Model	KM-570BL-7	KM-570BL	KM-572BL-7	KM-572BL
Application [material]	Heavy	Heavy	Heavy	Heavy
Max. sewing speed [spm]	2,000	2,000	2,000	2,000
Stitch length [mm]	0-9	0-9	0-9	0-9
Lift of the presser foot [mm]	Hand	10.5	10.5	10.5
	Knee	16	16	16
	Auto (Option)	16	-	16
Thread take up stroke [mm]	75	75	75	75
Needle bar stroke [mm]	36	36	36	36
No. of needles	1	1	2	2
Needle	DPx17 #23	DPx17 #23	DPx17 #23	DPx17 #23
Hook	Drive type	Rotary	Rotary	Rotary
	Position	Horizontal	Horizontal	Horizontal
	Capacity	x2.5	x2.5	x2.5
Lubrication	Auto	Auto	Auto	Auto
Thread roll	○	○	○	○
Auto backtack	○	-	○	-
Auto thread trimming	○	-	○	-
Motor	Servo motor	Clutch motor	Servo motor	Clutch motor

Specifications and appearance of products are subject to change without notice for the performance improvement.



OVERSEAS MARKETING DIVISION

SUNSTAR CO., LTD.
#178-212, Gajwa-dong, Seo-gu, Incheon, Korea
tel: 82-32-580-5600 fax: 82-32-584-3020

OVERSEAS NETWORK

| SUNSTAR U.S.A. INC |
tel: 1-305-591-9596 fax: 1-305-591-0661
| SUNSTAR DO BRASIL LTDA |
tel: 55-11-3362-3434 fax: 55-11-3362-3444
| SUNSTAR MACHINERY EUROPE GMBH |
tel: 43-2236-660-229 fax: 43-2236-660-2293
| SUNSTAR BELARUS OFFICE |
tel: 375-17-237-1834
| SUNSTAR MACHINERY SINGAPORE PTE LTD. |
tel: 65-6227-7545 fax: 65-6227-7905
| SUNSTAR BANGALORE BRANCH OFFICE |
tel: 91-80-2653-0365-6 fax: 91-80-2653-0367

OVERSEAS NETWORK

| SUNSTAR DELHI BRANCH OFFICE |
tel: 91-120-4560057-8 fax: 91-120-4560059
| SUNSTAR DHAKA BRANCH OFFICE |
tel: 88-02-881-9153 fax: 88-02-883-5707
| SUNSTAR CHITTAGONG BRANCH OFFICE |
tel: 88-031-255-2497 fax: 88-031-255-2497
| SUNSTAR JAKARTA BRANCH OFFICE |
tel: 62-21-4586-5839 fax: 62-21-4586-5840
| SUNSTAR HOCHIMINH BRANCH OFFICE |
tel: 84-8-3592-3703 fax: 84-8-3592-3704
| SUNSTAR HANOI BRANCH OFFICE |
tel: 84-4-2210-0560 fax: 84-4-6282-2433
| SUNSTAR SHANGHAI CO.,LTD |
tel: 86-21-6957-6308-6312 fax: 86-21-6957-6092
| SUNSTAR SHANGHAI CO.,LTD |
tel: 86-21-6353-2233 fax: 86-21-6353-8640
| SUNSTAR QINGDAO BRANCH OFFICE |
tel: 86-532-6691-1991 fax: 86-532-6691-2262
| SUNSTAR NANJING BRANCH OFFICE |
tel: 86-25-8459-4758 fax: 86-25-8459-4408
| SUNSTAR HANGZHOU BRANCH OFFICE |
tel: 86-571-8577-9477 fax: 86-571-8577-9478
| SUNSTAR DONGGUAN BRANCH OFFICE |
tel: 86-769-2249-1610 fax: 86-769-2234-4042
| SUNSTAR ZHENGZHOU BRANCH OFFICE |
tel: 86-371-8606-8393 fax: 86-371-8606-8393
| SUNSTAR TIANJIN BRANCH OFFICE |
tel: 86-22-6089-1737 fax: 86-22-6089-1737
| SUNSTAR SHISHI BRANCH OFFICE |
tel: 86-595-8858-881 fax: 86-595-8855-7874
| SUNSTAR CHENH DU BRANCH OFFICE |
tel: 86-28-8311-7620 fax: 86-28-8312-7620
| SUNSTAR NANNING BRANCH OFFICE |
tel: 86-771-386-6432 fax: 86-771-386-7432
| SUNSTAR NANCHANG BRANCH OFFICE |
tel: 86-791-384-9667 fax: 86-791-384-9663
| SUNSTAR SHENYANG BRANCH OFFICE |
tel: 86-24-2366-3268 fax: 86-24-2366-3268
| SUNSTAR HEFEI BRANCH OFFICE |
tel: 86-551-424-8000 fax: 86-551-424-8000
| SUNSTAR WUHAN BRANCH OFFICE |
tel: 86-27-8375-3080 fax: 86-27-8375-0371

WEB - SITE

www.sunstar.co.kr

E - MAIL

marketing@sunstar.co.kr

SunStar SunStar CO., LTD.



KM-570BL/572BL SERIES

High speed, 1/2-needles, unison feed, lock stitch sewing machine with horizontal large hook and automatic thread trimmer

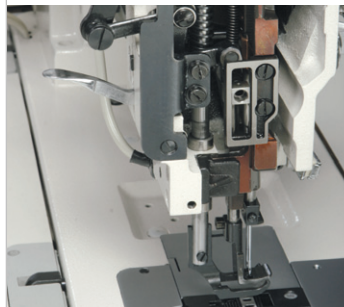
SunStar

KM-570BL/572BL SERIES

High speed, 1/2-needles, unison feed, lock stitch sewing machine with horizontal large hook and automatic thread trimmer

FEATURE

01



Powerful and stable upper feeding

With the block-type upper feeding structure, it displays strong power during the sewing with thickness gap and the sewing for extremely heavy materials.

02



Large hook (x2.5 capacity)

Maximizing productivity by adopting Rotary horizontal large hook (x2.5 capacity)

03



Large pulley and embedded synchronizer for work efficiency

The large pulley fitted for accurate needle position and control during the start and ending of sewing provides the highest efficiency for heavy fabric sewing, and the simple embedded synchronizer able to separate and adjust the pulley's up/down needle stop position individually.

04



Accurate upper feeding

The accurate movement of the upper feed and the feed dog can resolve puckering and slipping problem depending on sewing materials.

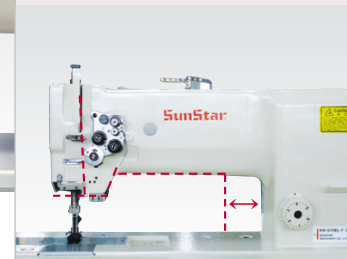
05



Multifunctional reverse button

The simple touch of the reverse button enables the reverse sewing and the up/down movement of the needle bar.

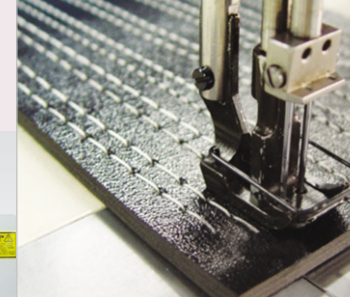
06



Expand working space

By extending length of the arm bed, wider working space can be secured for improved productivity.

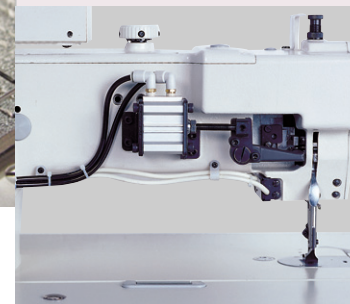
07



Stable and accurate sewing

Powerful unison feeding mechanism, it guarantees stable and accurate sewing stitch quality.

08



Air pressure auto knee-lifting device

Structure of automatic ascent of knee using aerial pressure. (option)

High speed 1, 2-needle unison feed lock stitch machine with automatic thread trimmer born with SunStar's advanced technology!

Combining highly advanced Fortuna-5 motor with high-speed twin needle sewing machine series, in which new various functions are integrated to be used conveniently, we have completely applied high-tech mechatronics to sewing machine. This would contribute to enhance quality of sewing pattern and productivity.

FORTUNA-5

Installed the Fortuna AC servo motor series 5 with up-to-date functions!!

Model	Input Phase	Main Functions	Standard Parts
S3AC55 - 1 <input type="checkbox"/>	1Ø 110V	<ul style="list-style-type: none"> Simple speed changing function using the program unit Categorized speed adjustment of start / end back tack 	<ul style="list-style-type: none"> Synchronizer
S3AC55 - 2 <input type="checkbox"/>	1Ø 220V	<ul style="list-style-type: none"> Adjustment of sewing machine speed increase curve Adjustment of the remaining upper thread's length after thread trimming 	<ul style="list-style-type: none"> Pedal connecting rod Power switch box etc.
S3AC55 - 3 <input type="checkbox"/>	3Ø 220V	<ul style="list-style-type: none"> Adjustment of the pressure for pedal operation 	



OPERATION BOX

Stable stitch length attainment

The installation of the Fortuna AC Servo motor Series V minimizes the speed change during the start and ending of sewing. And the AUTO function attains the stable stitch length.

